

# Colt Ethernet VPN

Low latency wide area Ethernet service

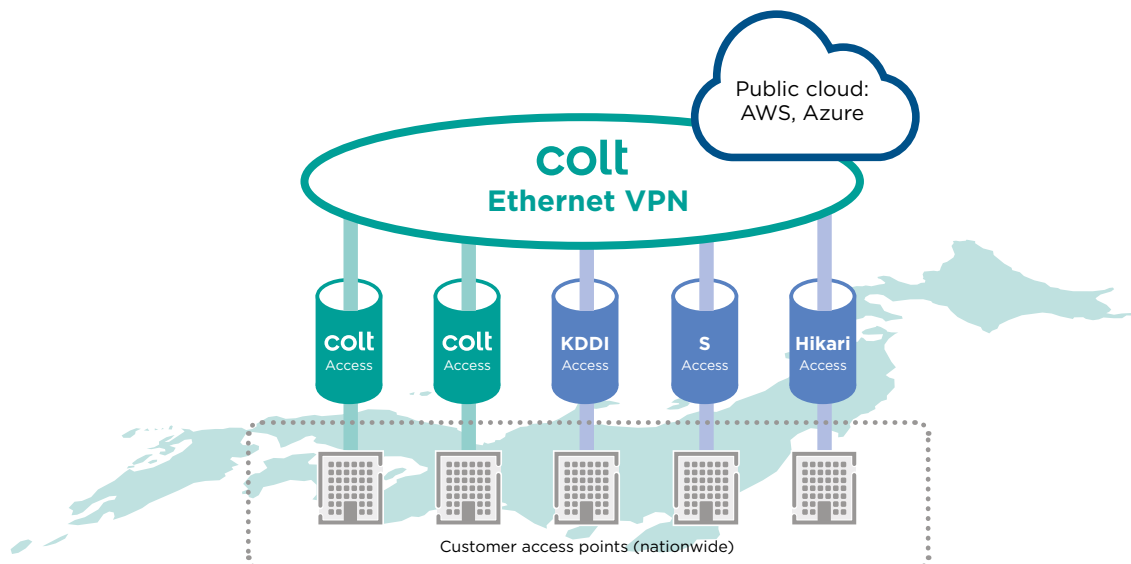
## What is Colt Ethernet VPN?

Colt's Ethernet VPN is an Ethernet-based VPN service that creates a multi-point connection between multiple LAN access points. With increasing traffic needs due to mass migration to cloud services and increasingly sophisticated corporate IT systems, our service reduces your TCO (Total Cost of Ownership) by providing a low-cost, high-bandwidth connection.

- All of Japan is covered, with expanding connections to major data centres. Various types of access lines to meet different customer needs are available.
- Cloud connections (AWS/Azure) are of course supported, with a single access line able to create a private network connection with multiple public cloud services.

### News access type: S Access

S Access is a private, best-effort 100Mbps line with coverage over the entirety of Japan. It provides a secure connection with high cost performance over a wide area of coverage.



## Service advantages



### High quality

- 100% core network redundancy, with optional redundancy in access circuits to customer sites allowing for quick switchover (<50ms) in the event of service disruption
- Reliable quality assurance (service delivery timeframe, availability, incident recovery time)



### Scalability and flexibility

- Multiple access networks: Bandwidth-guaranteed Colt or KDDI Access or best-effort S or Hikari Access
- Service startup in a few as 10 business days for high-bandwidth circuits (up to 1Gbps) if circuit-terminating equipment has already been installed
- Flexible bandwidth changes/upgrades without requiring physical onsite construction work



### Cloud synergy

- Access to cloud computing environments from multiple client access points through a secure private network connection to AWS or Microsoft Azure without traversing the internet
- Fast and easy bandwidth scaling: up/down/on/off to match your cloud connectivity needs
- Ever-expanding number of data centre connections; high-bandwidth connectivity from customer to DC to cloud and back again



## Access types

We provide multiple access types to match your needs as listed in the table below.

- Choose based on cost, performance and bandwidth
- Streamline costs choosing your preferred access type for each access point
- S Access best-effort circuits have Japan-wide coverage and offer great value with a secure, private connection

		Colt Access	KDDI Access	Newly added	Hikari Access
Overview		<ul style="list-style-type: none"> <li>• Great performance</li> <li>• Great reliability</li> <li>• Low latency</li> </ul>	<ul style="list-style-type: none"> <li>• Great reliability</li> <li>• Electrical fibre</li> </ul>	<ul style="list-style-type: none"> <li>• 100Mbps best-effort</li> <li>• Partnered network infrastructure</li> </ul>	<ul style="list-style-type: none"> <li>• Low cost</li> <li>• Best-effort</li> </ul>
Bandwidth		1Mbps ~ 2Gbps	0.5Mbps ~ 100Mbps	Best-effort (private network)	Best-effort
Service areas		Tokyo's 23 Wards, Tama, Kawasaki, Yokohama, Saitama, Chiba, Osaka	Japan-wide	Japan-wide	Japan-wide
SLA	Lead time	○	—	—	—
	Availability	○	○	○	○※1
	Time to recovery	○	○	○	○※1
Incident support desk		24/7/365	24/7/365	24/7/365	24/7/365
Incident response team		24/7/365	24/7/365	24/7/365	24/7/365 (Hikari Access from 9am to 5pm, or 24/7 with optional package)

\* Colt terminal equipment falls under Hikari Access domain is not SLA-covered.

## Colt Access specifications

Service	Colt Ethernet VPN (Colt Access)
Provided Interface(s)	10BASE-T, 100BASE-TX, 1000BASE-T/SX/LX, 10GBASE-LR
Port Settings	Access/Trunk Setting (Tagged VLAN Only) for each Access Point
VLAN ID	Designated by customer - VID 1 to 4000
Transmission Frame	Everything but Pause frame, LLDP, Link-OAM
Redundancy	Non-Redundant (Single Class), Redundant (Dual Class)
Intra-Network Redundancy	Redundant (Single Class / Dual Class)
Transmission frame size	1600 byte (Supports 9200 byte with Optional Package)
Optional services	Jumbo Frame (9200 byte) QoS Features (Through IEEE802.1p or IP TOS) Reporting (data volume)

\*Contact us through the link at the bottom of the page for more information regarding KDDI, S and Hikari Access

The information on this sheet is subject to change without prior notice.

- Website [asia.colt.net](http://asia.colt.net)
- Twitter [@Colt\\_Asia](https://twitter.com/Colt_Asia)
- YouTube [COLT Technology Services - Asia](#)

For more information, please contact us at: [asia.colt.net/contact](http://asia.colt.net/contact)

